

*The  
Rocking  
Bohemian*



# The Intuitive Channel

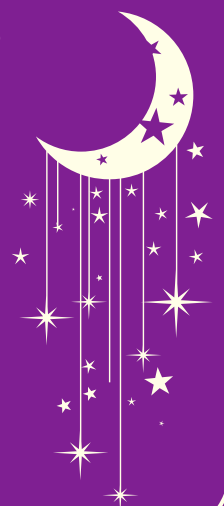
Creative Soul Type

[TheRockingBohemian.co.uk](http://TheRockingBohemian.co.uk)

# Contents.



- 3** Welcome Beautiful Soul.
- 4** Your Inner World as a Channel.
- 7** Your Channelled Toolkit.
- 10** The Professional Path.
- 14** Finding Your Community.
- 18** Common Pitfalls
- 21** The Path to Mastery.
- 24** Where Are You on the Path?
- 26** Sacred Reflection Sheet.
- 27** Closing Thoughts.



# Welcome, Beautiful Soul.



## You are The Intuitive Channel - The Bridge between the Seen and the Unseen.

If you have found your way to these pages, it is because your soul speaks a language that many others have forgotten. You don't just "create" - you channel. You are the vessel through which the universe whispers its secrets, turning flashes of insight and spiritual downloads into visible magic.

Being an Intuitive Channel means navigating the world with your heart wide open. You feel the shifts in energy, the pull of the moon, and the silent songs of the earth. Sometimes, this depth can feel overwhelming, like you're carrying a thousand stories that aren't yours to tell. But here, in this booklet, we celebrate that sensitivity as your greatest superpower.

As an Intuitive Channel, your creativity is a sacred ritual. You aren't interested in "hustle" or "perfection." Instead, you thrive on:

- **Surrender:** Letting the ideas flow through you rather than forcing them.
- **Connection:** Creating art, words, or spaces that touch the soul and offer healing.
- **Intuition:** Trusting those "gut feelings" and synchronicities that guide your hands and your heart.

**Honour the flow and trust your magic:** You are a Bohemian Visionary. The world needs the light that only you can anchor.

So take a deep breath, dear soul. The channel is open, and your journey starts now.

With love and Bohemian magic,

The Rocking Bohemian

# Your Inner World as an Intuitive Channel



## Core Motivations



### Your Soul's Calling.

As an Intuitive Channel, your creative path is a sacred journey of surrender. You aren't here to build monuments to your own ego; you are here to be the bridge between the seen and the unseen, allowing universal truths to find their home in the physical world.

- **To Be a Pure Conduit:** Your deepest drive is to remain open - to stay clear and quiet enough to hear the whispers of inspiration. You are motivated by that electric moment when a vision or message from beyond your conscious mind seeks a way out. Your goal is to bring that spark into the world with as much purity and honesty as possible.
- **To Connect with Deeper Truths:** You create because you are hungry for the sublime. You are driven by a desire to touch the heartbeat of the universe and explore the themes that connect us all. For you, the creative act is a spiritual practice - a way to plug into the collective consciousness and commune with the divine source of all things.
- **To Surrender and Trust:** You find your greatest peace when you let go of the "how." Rather than forcing an outcome or fighting for control, you thrive when you trust your intuition. Your motivation comes from the beautiful, terrifying, and magical act of allowing the creative process to flow through you, exactly as it is meant to.
- **To Serve the Message:** You feel a profound responsibility to the work itself. You are the guardian of ideas that have no other voice and the messenger for insights that heal and transform. You create not for your own glory, but for the benefit of those who need to hear what you have been chosen to say.

# Your Inner World as an Intuitive Channel



## Core Fears



### Navigating the Shadows.

Every light casts a shadow, and for you, the shadow often takes the form of doubt. Because your gift is so closely tied to your connection with the unseen, your deepest fears often stem from the thought of that sacred thread being severed or misunderstood.

- **The Fear of the Silent Signal:** Your greatest dread is the "static" - the terrifying thought that the signal to your creative source might one day fade or vanish. You fear the internal silence that comes with disconnection, worrying that without that celestial whisper, you might be left feeling empty or without a sense of purpose.
- **The Burden of Misinterpretation:** Because you feel a sacred duty to the visions you receive, you often worry about your own "translation." You fear that you might misunderstand, distort, or fail to find the right words or colors to do justice to the message. You worry that you aren't a clear enough lens for the light trying to pass through you.
- **The Weight of Ego Interference:** You are hyper-aware of the human ego's power to clutter the channel. You fear that your own conscious plans, personal desires, or need for control will block the creative flow. You worry that by trying too hard, you might accidentally "pollute" the clarity of the message you were meant to deliver in its purest form.
- **The Whisper of the Fraud:** In quiet moments, you might hear the sting of the "Inner Skeptic." You fear that your intuitive experiences aren't actually real - that you're simply making it up or, worse, that you're delusional. This fear of being seen as a fraud can cause you to pull back and dismiss your most profound insights before they ever have a chance to bloom.

# Your Inner World as an Intuitive Channel



## Core Fears



### **A Gentle Reminder for Your Heart.**

Please know that the "static" you fear is often just the universe's way of asking you to rest; your connection is a part of your DNA, and it can never truly leave you. Trust that the source which chose you to be its messenger also trusts your ability to translate the message perfectly, even - and especially, through your beautiful human imperfections.

You are not a fraud; you are a pioneer of the soul, and the very fact that you worry about staying "pure" is the greatest evidence of your integrity. When the doubts get loud, simply breathe and remember: you don't have to carry the weight of the world - you only have to be the open doorway through which the light flows.





# ☆ Your Channelled Toolkit

Your toolkit is not filled with hammers and chisels to force your will upon the world. Instead, it is a collection of tuning forks and compasses. These are the instruments you use to quiet the noise, open your heart, and faithfully translate the whispers of the universe into form.

## 1 - The Inner Attunement Kit.

These are your internal faculties - the "hardware" you use to catch the celestial signal.

- **Deep Listening & Intuition:** This is your primary instrument. It is your ability to hear the song beneath the silence. By listening beyond the surface chatter of daily life, you learn to trust the whispers of nature and the collective soul.
- **Humility & Surrender:** This is the art of stepping aside. To be a pure vessel, you must be willing to lay down your personal plans and preconceptions, allowing the idea that wants to be born to take the lead.
- **Discernment:** Your gift is knowing the difference between the "signal" of true inspiration and the "static" of your own fears or conditioned thoughts. It is the wisdom to know which inner voice is the one worth following.
- **Mindful Presence:** Inspiration rarely visits a distracted mind. By practicing presence, you create the quiet, empty sanctuary required for a new idea to finally land.





# ☆ Your Channelled Toolkit

## 2 - The Ritual & Practice Kit (The Tuning Process).

These are your sacred habits - the repeatable actions you take to bridge the gap to your Source.

- **Your Sacred Space:** Whether it's a corner of your studio filled with incense or a hidden spot in the woods, you need a physical sanctuary. This is your "landing strip" for the divine, kept clear of clutter and the demands of the mundane world.
- **Stillness Practices:** Regular meditation and silence are your maintenance tools. They quiet the internal chatter, making your mind a more receptive surface for subtle energies to leave their mark.
- **The Stream of Consciousness:** Use tools like morning pages or automatic writing to open the floodgates. This isn't about "good" writing; it's about opening a direct, unjudged line to your subconscious.
- **Symbolic Keys:** Use Tarot, oracle decks, or runes as mirrors for your soul. These aren't for "fortune-telling"- they are focusing aids that help you bypass your logical brain and unlock the archetypal patterns waiting inside you.





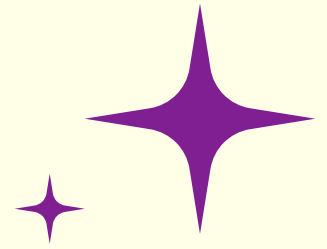
# ★ Your Channelled Toolkit

## 3 - The Expression Kit (The Amplifier & Speaker)

Once you receive the message, you must give it a body. These are your tools of translation.

- **A Mastered Craft:** Your creative skills – be it painting, writing, or song, are the "speakers" for your message. The more you refine your technique, the more clearly your vision can be heard. A pure signal deserves a high-quality instrument.
- **Metaphor & Symbolism:** The Universe rarely speaks in literal terms. Your toolkit includes a rich library of myths, symbols, and metaphors, allowing you to translate vast, non-verbal truths into a language others can feel and understand.
- **The Art of "The First Thought":** This is your ability to capture the raw, unedited lightning strike of an idea before the "logical editor" can talk you out of it. Your toolkit must include the habit of keeping a voice recorder or a sketchbook nearby at all times. In the world of the Channel, the first spark is often the most sacred.
- **Sensory Anchoring:** Because your work is so spiritual, you need tools to tether it to the physical world. This includes using textures, scents, or specific frequencies of music while you create. These act as "conductors" that help pull the high-vibration message down into your physical medium.
- **Empathy as a Lens:** You don't just see the world; you feel it. Your toolkit includes the profound ability to "vibe" with your audience. You use your empathy to ensure the message you are channeling lands in a way that provides healing, comfort, or awakening for those who receive it.

# The Professional Path



## Job roles and career opportunities

*The Channel archetype thrives in roles where their deep intuition, ability to synthesise unseen patterns, and capacity to act as a conduit for ideas are valued. Their career paths often lead them away from purely data-driven or highly structured corporate environments and toward roles centred on meaning, healing, and vision.*

### Healing, Guidance & Holding Space.

*These roles directly use your empathy and intuitive ability to guide and support others.*



- **Therapist or Counsellor:** Especially in modalities like Jungian analysis, transpersonal psychology, or art/music therapy, where connecting with the subconscious is key.

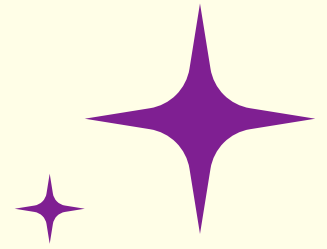


- **Life Coach or Spiritual Director:** Guiding individuals to connect with their own inner wisdom and purpose.
- **Bodywork & Energy Healer:** Roles like Reiki master, acupuncturist, or craniosacral therapist, which require a high sensitivity to subtle energies.



- **Hospice Worker or End-of-Life Doula:** Holding a calm, compassionate space for individuals and families during profound life transitions.
- **Mediator:** Intuitively sensing the unspoken dynamics between parties to facilitate understanding and resolution.

# The Professional Path



## Job roles and career opportunities



### Creative & Expressive Arts.

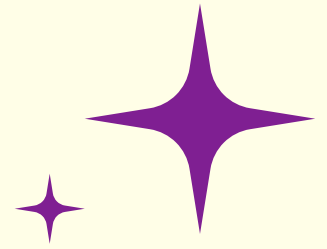
Here, you could act as a direct channel for creative expression, bringing visions into physical form.



- **Poet, Novelist, or Screenwriter:** Especially in genres like fantasy, sci-fi, or magical realism, where they can translate otherworldly concepts into stories.
- **Visionary Artist or Abstract Painter:** Creating art that expresses emotions, energies, or concepts that lie beyond literal representation.
- **Songwriter or Composer:** Channelling melodies and lyrics that seem to come from an unknown source, creating music that deeply moves listeners.
- **Art, Music, or Dance Therapist:** Using creative expression as a modality for healing and self-discovery in others.



# The Professional Path



## Job roles and career opportunities



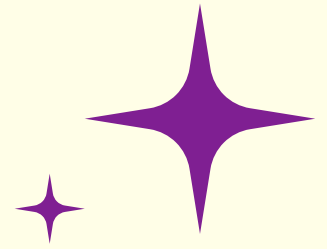
### Research, Synthesis & Strategy.

*These roles use The Channel's ability to see the "big picture" and connect disparate pieces of information.*

- **Qualitative Researcher or User Experience (UX) Researcher:** Deeply listening to people's stories to uncover the unspoken needs and patterns that can inform a project or product.
- **Trend Forecaster or Futurist:** Intuitively sensing shifts in the collective consciousness to predict future trends and possibilities.
- **Brand Strategist:** Acting as a "channel" for a company's soul, helping them discover their core identity and archetypal story.
- **Organisational Development Consultant:** Sensing the underlying culture and energetic blocks within a company to facilitate positive change.



# The Professional Path



## Job roles and career opportunities



### Spiritual & Esoteric Paths.

*These are the most direct applications of your innate gifts.*

- **Meditation or Mindfulness Teacher:** Guiding others into states of stillness and receptivity.
- **Professional Astrologer, Tarot Reader, or Intuitive Guide:** Using symbolic systems as a toolkit to channel insight for clients.
- **Retreat Facilitator:** Creating and holding sacred space for groups to do deep inner work.
- **Writer or Teacher on Esoteric Subjects:** Translating complex spiritual concepts into accessible books, courses, and workshops.



# Finding ✨ Your Community



## Finding Your Soul Tribe

### **The Circle of Resonance**

While your journey as a Channel is deeply personal and often solitary, you were never meant to carry the light alone. There is a profound magic that happens when two or more vessels gather, a shared frequency that amplifies the signal and makes the whispers of the universe even clearer.

Finding your soul tribe isn't about fitting in; it's about finding those rare few who speak your silent language and respect the sanctity of your flow.

### **Seeking the Resonance.**

Finding your community isn't about traditional "networking" - it's about energetic resonance. Your tribe consists of those who operate on your frequency and understand that "truth" is something felt before it is spoken. Your people are out there, waiting for your light to signal them.

### **Follow the Sacred Hum.**

Trust your internal compass. Pay attention to the places, teachers, and creative themes that create a "hum" of recognition in your chest. Your intuition is your primary search tool. If a hidden botanical garden, a workshop on ancestral healing, or a specific old bookstore feels "magnetic," go there. That pull is the universe guiding you to your people.

### **Seek Shared Ritual, Not Just Small Talk.**

As a Channel, you connect most deeply through shared presence rather than chatter. Look for circles centered on dream analysis, sound baths, art therapy, or lunar rituals. A bond forged in a shared, non-verbal state of creation is often more enduring than one made over coffee. You are looking for those who are comfortable in the "Deep End."

# Finding Your Community



## Finding Your Soul Tribe (Continued..)

**Wander the Wild Edges.** Your tribe is rarely found in the mainstream. You are more likely to meet kindred spirits in the "niche" spaces: metaphysical shops, lectures on Jungian archetypes, silent retreats, or esoteric book clubs. These interests act as a natural filter, drawing in those who, like you, are looking for the magic beneath the surface.

### **Recognise Your Heart in Another.**

Your superpower is deep listening. You will find your tribe not by shouting to be heard, but by recognising your own inner landscape in the art, words, or silence of another. When you hear someone speak your "unspoken language," lean in. That is the signal you've been waiting for.

**Nurture Depth Over Breadth.** You do not need a vast network of acquaintances to feel supported. Your sensitive spirit thrives on quality, not quantity. One or two "soul-deep" connections - people who can hold space for your visions without judgement are worth more than a thousand superficial contacts. Protect your energy and prioritise the few who truly "see" **You**.

**A Final Thought for the Channel:** Your tribe isn't just people; it's the ancestors, the elements, and the spirits of the ideas themselves. You are never truly alone in the flow.



# Finding ✨ Your Community



## Cultivating Your Own Sacred Circle

*As a Channel, you don't need to be a loud leader or a charismatic performer to bring people together. Your strength lies in your ability to be a powerful Space Holder. You have the unique gift of creating a "container" - a physical or energetic sanctuary where others feel safe enough to lower their guards and listen to their own souls.*

### **Plant a Quiet Intention.**

Every sacred gathering begins with a whisper, not a shout. Ask yourself: What space do I wish existed for me? Perhaps it's a monthly dream-sharing circle, a quiet afternoon where you create art in collective silence, or a safe harbor to discuss intuitive downloads without judgment. Define your purpose with a clear, heartfelt intention, and let the universe hear it first.

### **Anchor the Energy.**

You don't need to be a teacher; you simply need to be the anchor. Your role is to set the time, prepare the atmosphere, and hold the vibration. Whether it's lighting a single candle or starting with a minute of shared silence, these simple rituals signal to the spirit that the space is sacred. Your calm, grounded presence is the foundation that makes the container feel safe.



# Finding ✨ Your Community



## Cultivating Your Own Sacred Circle (Continued..)

### **Invite the Resonance.**

Your community will grow through soul-to-soul invitation, not aggressive promotion. Instead of "marketing," reach out personally to the one or two people you feel a true energetic "click" with. Trust the law of resonance: those who belong in your circle will feel the pull, and they will naturally draw in others who share your wavelength.

**Honour the Natural Rhythm.** Consistency creates a sense of spiritual safety. Whether you gather under the light of the Full Moon, meet bi-weekly for creative flow, or celebrate the turning of the seasons, these rhythms create a reliable anchor point. A steady pulse allows your community to trust the container and sink deeper into the experience each time you meet.

### **Make Listening Your Sacred Law.**

The most transformative gift you can offer your tribe is the practice of Deep Witnessing. Establish a space where, when one person shares, the others simply listen without offering advice, "fixing," or cross-talk. This creates the profound, non-judgmental safety that we as intuitive souls crave. In your circle, being truly heard is the greatest medicine.



# Common Pitfalls and How to Overcome Them.



The Channel's greatest strengths - receptivity, intuition, and connection to the unseen also create a unique set of challenges. Understanding these pitfalls is the key to a sustainable and grounded creative life.

Here is some guidance on the common pitfalls of The Channel archetype and how to overcome them.

## **Pitfall 1: Weak boundaries and Energetic Boundaries.**

Because you are naturally open and receptive, you can unconsciously absorb the emotions, thoughts, and stress of the people and environments around you. This can leave you feeling drained, anxious, or creatively blocked, without knowing why. You may mistake others' "static" for your own.

### **How to Overcome It.**

- **Practice Energetic Hygiene:** Create a simple daily ritual to cleanse your energy field. This could be visualising a protective bubble of light around you, taking a salt bath, smudging your space with sage, or simply spending a few minutes in nature to ground yourself.
- **Learn How to 'Hang up' the Phone:** After a deep creative session or an intense social interaction, consciously decide to close the channel. Create a symbolic gesture, like washing your hands, closing a notebook, or saying a phrase like "The work is done for today," to signal to your psyche that it's time to return fully to yourself.

# Common Pitfalls and How to Overcome Them.



## **Pitfall 2: Self Doubt and Spiritual ‘Imposter’ Syndrome.**

Your inspiration comes from a non-logical, intuitive place, which can be difficult to trust or explain in a pragmatic world. This can lead to a paralysing fear that you are "making it all up," that your insights are not valid, or that you are delusional. This is the core fear of being a fraud.

### **How to Overcome It.**

- **Keep a Log of Evidence:** Dedicate a journal to tracking your journey. Write down synchronicities, intuitive hits that turned out to be correct, and moments when your creative work perfectly captured an emotion that resonated deeply with someone else. This log becomes a tangible record of your connection's validity, which you can turn to in times of doubt.
- **Focus on the Fruit, Not the Root:** Shift your focus from trying to "prove" the source of your inspiration to observing the impact of the work itself. Did the poem move someone? Did the painting create a sense of peace? Did your insight help a friend? If the "fruit" is real and good, you don't need to have a scientific explanation for the "root."

# Common Pitfalls and How to Overcome Them.



## **Pitfall 3: Ungroundedness and ‘Spaced out’ Detachment .**

Spending too much time in the ethereal realms of inspiration can make it difficult to function in the material world. You might neglect physical health, finances, relationships, or the practical steps needed to bring your creative projects to completion. You have the vision but struggle to build the foundation.

### **How to Overcome It.**

- **Anchor Yourself in the Physical:** Make grounding a non-negotiable part of your routine. Engage in activities that connect you to your body and the earth: gardening, cooking a nourishing meal, walking barefoot on the grass, lifting weights, or practising a martial art.
- **Befriend Structure:** Use simple, practical tools to bring your visions to earth. Set small, achievable goals. Use a calendar for deadlines. Create a budget for your projects. See these structures not as creative prisons, but as the sturdy trellises that allow your mystical vines to grow and flourish in the real world.

# ✦ The Path to Mastery ✦

## Stage 1: The Dreamer



### Learning to Listen.

In this first stage, you are waking up to the nature of your gift. Your connection to the Source may feel sporadic or confusing, often drowned out by the "static" of self-doubt. Your primary task here is simple: Learn the sound of the whisper.

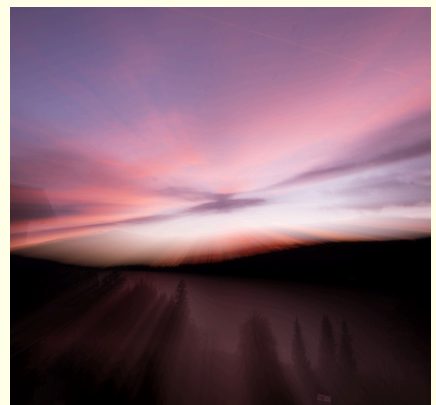
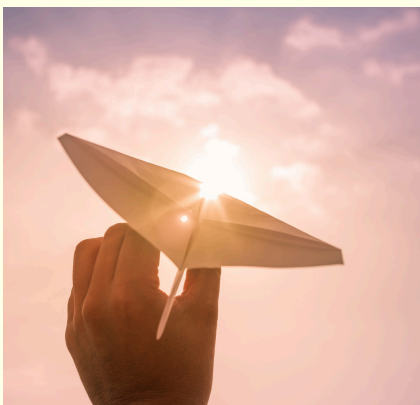
### Key Activities.

**Your Focus:** Receptivity and Awareness.

**Your Practice:** Tracking synchronicities and keeping a dream journal to validate your inner world. You are "testing the line," dabbling in different creative forms to see which ones make your soul hum.

**The Growth Point:** Learning to distinguish the quiet, neutral voice of intuition from the loud, frantic voice of the ego.

**The Challenge:** Overcoming self-doubt. You must learn to trust that your experiences are real and valid, even when they defy logic.



# ✦ The Path to Mastery ✦



## Stage 2: The Apprentice

### Building the Bridge.

Here, you move from passive listening to active, intentional co-creation. You realise that to be a clear conduit, you must build a strong structure - both internally through ritual and externally through skill.

### Key Activities.

**Your Focus:** Integration and Craft.

**Your Practice:** You are mastering your Mystical Craft (grounding, energetic protection, and opening/closing rituals) alongside your Physical Craft (the technical skills of your art). You understand that a keen vision requires a well-tuned instrument to be heard clearly.

**The Deep Listen:** Consciously practising the translation of abstract feelings into concrete words, images, or melodies.

**The Wisdom:** Balancing the spiritual and the practical. You must resist the urge to live entirely in the clouds and commit to the disciplined, real-world work of mastering your art.





# The Path to Mastery



## Stage 3: The Oracle

### Becoming the Message.

This is the stage of mastery. The bridge is built, the connection is stable, and the veil between "you" and "Source" becomes thin. You no longer just receive messages; you embody the wisdom you transmit. Your life and your art become a single, seamless prayer.

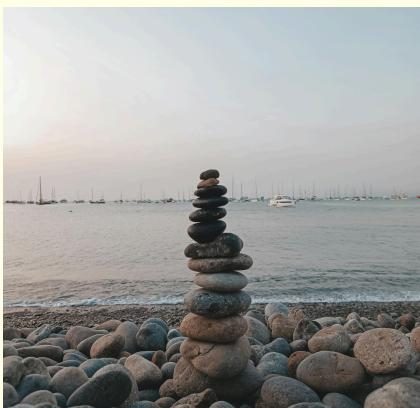
### Key Activities.

**Your Focus:** Embodiment and Service.

**Your Practice:** Creating from a state of effortless "flow," where the work feels as though it is creating itself. You mentor others, nurturing the intuitive gifts of the next generation and choosing projects based on soul-purpose rather than ego-validation.

**The Growth Point:** Living in complete alignment. Your daily life becomes a reflection of the universal truths you channel.

**The Challenge:** Remaining humble. As an Oracle, you know you are not the source of the light, but its faithful custodian. Your final task is to fully release the need for credit, allowing yourself to be a clear, grounded, and beneficial bridge between worlds.





# Where Are You on the Path?



Read through the following statements and notice which section resonates most deeply with your current creative season. Don't overthink - listen for the "hum" of recognition.

## Group A: The Whispers

- I often feel "nudges" or have vivid dreams, but I'm not always sure what they mean.
- I find myself questioning if I'm actually intuitive or if I'm just making it all up.
- I create in bursts when I feel "inspired," but I struggle to find the connection when I'm busy or stressed.
- I often see repeating numbers (like 11:11) or synchronicities, but I'm still learning how to track and trust them.

If you resonate most with Group A: You are in the **Dreamer** stage. Your current magic is in the awakening. Focus on quietening the noise and validating your experiences.

## Group B: The Bridge

- I have established a regular creative practice, even when I don't feel "the spark."
- I am actively working on my technical skills (painting, writing, music) because I want my work to do justice to my visions.
- I have a ritual for starting my work (lighting a candle, meditating, or clearing my space).
- I am learning how to pull a vague feeling down into a tangible project, even if it feels like "hard work" sometimes.

If you resonate most with Group B: You are in the **Apprentice** stage. Your current magic is in the integration. Focus on the marriage of your spiritual ritual and your physical craft.

## Group C: The Flow

- When I create, I often lose track of time and feel like a witness to my own work.
- I no longer worry about "where" the ideas come from; I simply trust that they will be there when I open the channel.
- My lifestyle, my values, and my art feel like they are all saying the same thing.
- I feel a deep sense of responsibility to share what I know and support other creative souls on their path.

If you resonate most with Group C: You are in the **Oracle** stage. Your current magic is in embodiment. Focus on staying humble and serving the message above the ego.



Now that you've identified where you sit on the path, here are your focused missions to help you deepen your connection and strengthen your bridge.

### **For the Dreamer: Establishing the Signal.**

Your mission is to prove to your conscious mind that your intuition is a reliable guide.

**The 7-Day Synchronicity Hunt:** For one week, carry a small "Magic Log." Write down every repeating number, animal sighting, or "coincidence" you encounter. Don't analyse them; just acknowledge them with a "Thank you."

**The Morning Download:** Before you check your phone or speak to anyone, spend five minutes free-writing. Let whatever "static" is in your head hit the paper until the whispers start to come through.

**The "Maybe It's Real" Experiment:** Pick one small intuitive nudge you receive today- like taking a different route home or reaching out to a friend - and follow it. Observe what happens without judgement.

### **For the Apprentice: Strengthening the Vessel.**

Your mission is to marry your spiritual flow with your physical discipline.

1. **Design Your "Opening" Ritual:** Create a 2-minute ritual that signals to your brain that the channel is open. It could be lighting a specific scent of incense, putting on a certain pair of "creative rings," or a specific breathing pattern.
2. **The Technical Deep-Dive:** Identify one technical skill in your craft (e.g., color theory, metaphorical structure, chord progressions) that feels "clunky." Spend thirty minutes a day for a month practicing only that. Make your instrument worthy of the message.
3. **The "Translation" Exercise:** Take a dream or a vague feeling and try to express it in three different ways: a sketch, a poem, and a single melody or sound. Practice moving the "unseen" into the "seen."

### **For the Oracle: Embodying the Message.**

Your mission is to release the ego entirely and live as a walking prayer.

1. **The "Hollow Bone" Meditation:** Spend time in nature specifically practicing being a witness. Imagine the wind blowing through you as if you were a flute. Practice the feeling of being a vessel for something greater than yourself.
2. **Radical Alignment Audit:** Look at your daily habits. Is there anything in your life (diet, media, relationships) that feels like "static" in your channel? Gently release one thing that no longer matches the frequency of the work you bring through.
3. **The Gift of Mentorship:** Find one person who is in the "Dreamer" stage and offer them a word of genuine encouragement. Share a story of your own early doubts to help them normalise their experience.

# Sacred Reflection Sheet

A space to anchor your insights and honour your evolution.

*Take a few deep breaths. Light a candle or hold a stone that feels grounded. Reflect on the journey you've taken through these pages and allow your intuition to guide your pen.*

**1. The Internal Whisper.** What is the most significant "Aha!" moment you had while reading about the Intuitive Channel? What felt like a direct message to your soul?

**2. Identifying the Static.** Which core fear has been the loudest in your life lately? How does it feel in your body to finally name it and offer it reassurance?

**3. Honouring the Vessel.** What is one way you can better "tune" your instrument this week? (Is it more sleep, a clearer workspace, or a new daily ritual?)

**4. The Call to Create.** If you surrendered the need for perfection right now, what is the first thing your "inner oracle" wants to express?

**5. My Soul Statement.** Write a one-sentence "I am" statement that affirms your role as a Channel (e.g. I am a clear and grounded bridge for the wisdom of the stars.)

## My Creative Intentions for the Next Moon Cycle:

- **To Listen to:**
- **To Release:**
- **To Channel:**

**Final Blessing:** May you always remember that you are not just a person trying to be creative. You are the Universe's way of experiencing its own magic. Trust the flow.

# ✦ Closing the Circle ✦

## **The Final Unfolding: You are the Light and the Lens.**

We have journeyed through the depths of your Intuitive Channel soul - exploring the sacred motivations that drive you, the shadows that occasionally dim your light, and the spiritual toolkit you carry within.

Being a bohemian creative of this type is not a task to be completed; it is a way of being. You are a bridge builder. You are the one who stands at the threshold of the infinite and brings back the colours, words, and whispers that the rest of the world has forgotten how to hear.

### **As You Close This Book, Remember:**

- Your sensitivity is your strength. The "static" of the world may be loud, but your internal signal is stronger. Trust it.
- You don't have to do it all at once. Whether you are a Dreamer, an Apprentice, or an Oracle, you are exactly where you need to be. Every masterpiece began as a single, quiet nudge.
- Surrender is your superpower. When you feel the pressure to "perform," simply stop. Breathe. Return to the state of the hollow bone. Let the universe do the heavy lifting.
- Your tribe is waiting. By standing firmly in your truth and holding your space, you become a lighthouse for your soul-family. They will find you by the frequency you emit.
- The world does not need more "perfect" art; it needs more channelled truth. It needs the medicine that only you can provide through your unique lens.

Take one final, deep breath. Feel the golden thread of connection stretching from the crown of your head into the stars, and the roots of your soul reaching deep into the earth. You are grounded. You are open. You are ready.

Go forth and weave your magic.

love from,

The Rocking Bohemian x

*The  
Rocking  
Bohemian*